

Because life is

Petty<sup>TM</sup>  
Real

9 Blucher Street  
Colne  
BB8 0HQ



## For Sale

Price £65,000

- Popular residential location on Blucher Street, Colne
- Ideal for first-time buyers, downsizers, or investors
- Mid-terrace dwelling offered with no onward chain
- Comfortable front lounge
- Separate dining room

- Fitted kitchen positioned to the rear
- Two bedrooms
- Modern three-piece shower room
- Enclosed rear yard with low maintenance
- Viewing recommended



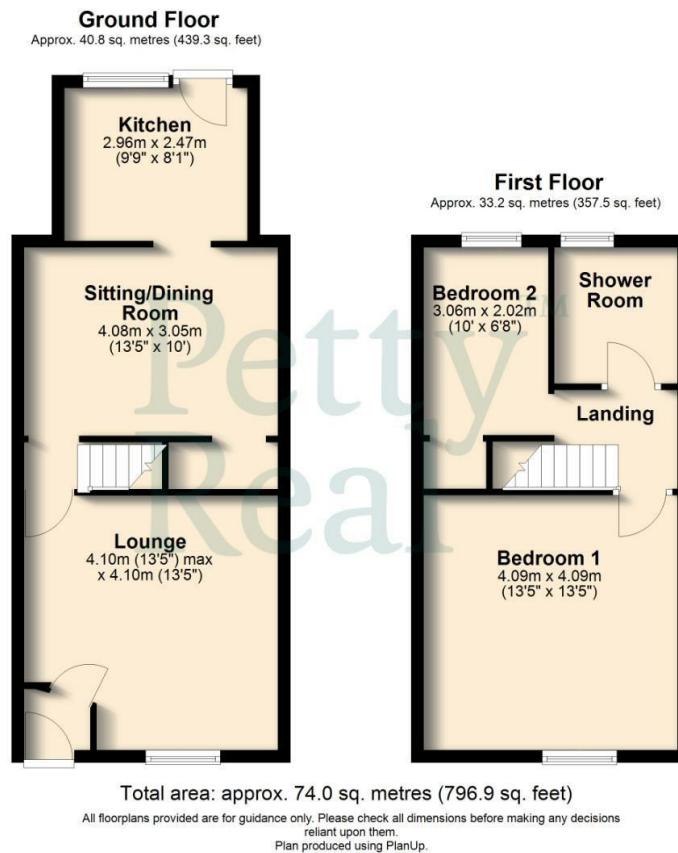
Located on the ever-popular Blucher Street in Colne, this attractive mid-terrace dwelling is offered to the market with no onward chain, making it an ideal purchase for first-time buyers, downsizers, or buy-to-let investors.

The property is entered via an entrance vestibule which leads into a comfortable front lounge, providing a welcoming living space. To the rear is a separate dining room, offering ample space for dining and entertaining, with access through to a fitted kitchen. The kitchen is arranged separately and provides a practical layout with a range of wall and base units, work surfaces, and space for appliances.

To the first floor are two well-proportioned bedrooms, with the main bedroom positioned to the front of the property. Completing the accommodation is a modern three-piece shower room, finished in a contemporary style and comprising a shower enclosure, wash basin, and low-level WC.

Externally, the property benefits from an enclosed rear yard, providing low-maintenance outdoor space.

Conveniently located close to Colne town centre, local amenities, schools, and public transport links, this well-presented home combines practicality with a popular residential setting. Early viewing is strongly recommended to fully appreciate the accommodation on offer.



These particulars, whilst believed to be accurate are set out as a general outline only for guidance and do not constitute any part of an offer or contract. Intending purchasers should not rely on them as statements of representation of fact, but must satisfy themselves by inspection or otherwise as to their accuracy. No person in this firm's employment has the authority to make or give any representation or warranty in respect of the property.

11 Albert Road, Colne, Lancashire, BB8 0RY  
T. 01282 868686  
Colne.sales@pettyreal.co.uk

[www.pettyreal.co.uk](http://www.pettyreal.co.uk)